

GLIDING FEDERATION OF AUSTRALIA

AIRWORTHINESS ADVICE NOTICE:

REF: GFA/AN 40 SCHEMPP-HIRTH 4

GLIDER TYPES AFFECTED:

MINI-NIMBUS T.C. No. 328

Variants: Mini-Nimbus HS7  
Mini-Nimbus B  
Mini-Nimbus C

REASON:

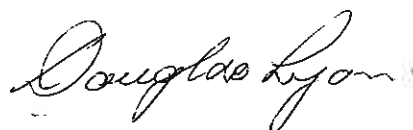
At heavy landings with wheel brake applied it is possible that the front landing gear strut may be damaged by the bearing pin for the brake arm. Therefore a replacement of the brake arm is recommended.

INSTRUCTIONS:

- a. Solder off the nipple from the brake cable and take off the wheel with the brake arm.
- b. Saw off the bearing pin for the brake arm inside of the front landing strut and file it down.
- c. Put a new brake arm (drawing Mini-Nimbus HS7 No. 10.039A) onto the front landing gear strut. (See sketch attached).
- d. Mount the wheel and the brake cable and solder on the brake cable nipple.

MATERIAL:

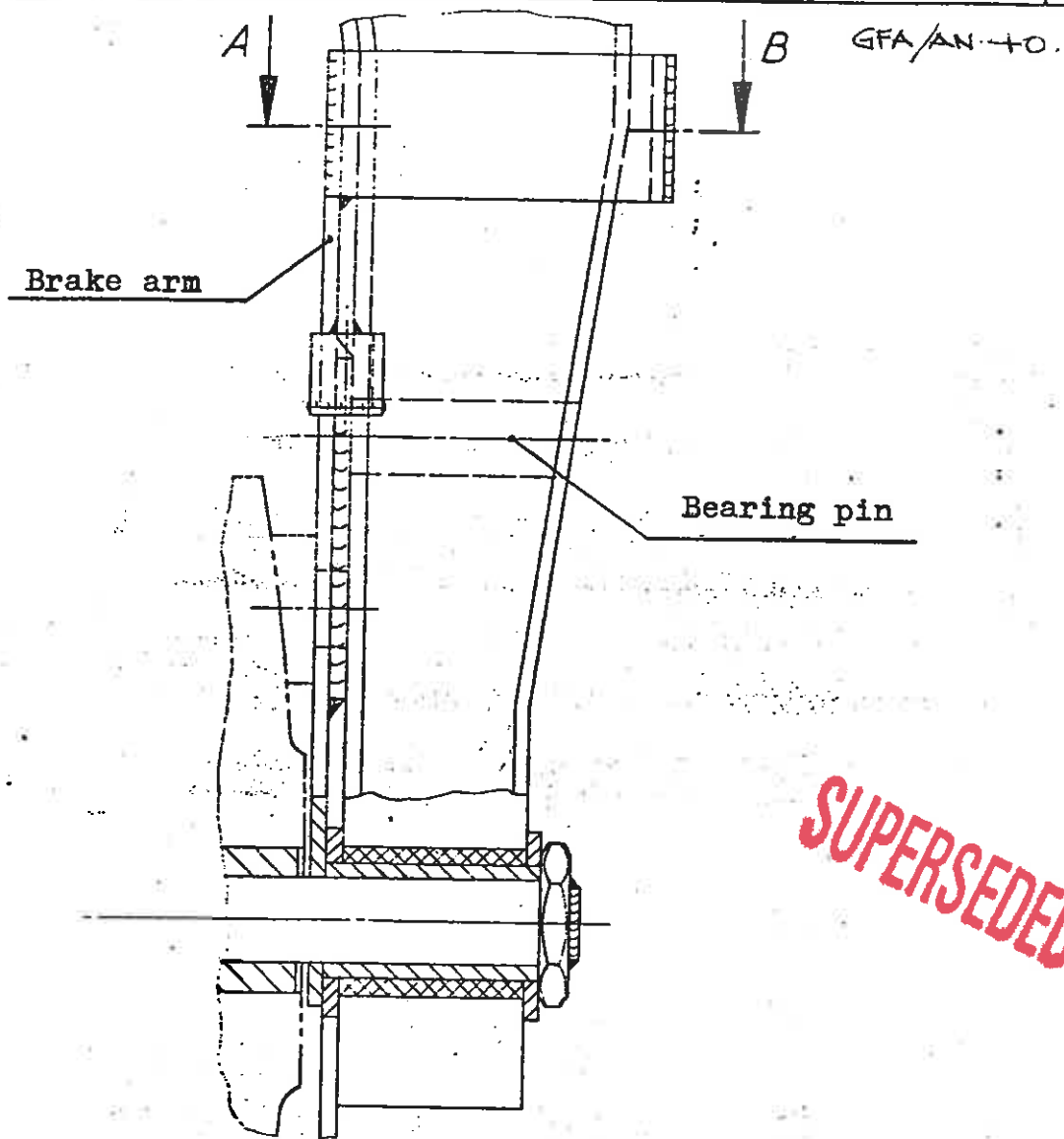
Brake arm in accordance with the Drawing Mini-Nimbus HS7 No. 10.039A.



DOUGLAS LYON  
CHIEF TECHNICAL OFFICER AIRWORTHINESS  
GLIDING FEDERATION OF AUSTRALIA

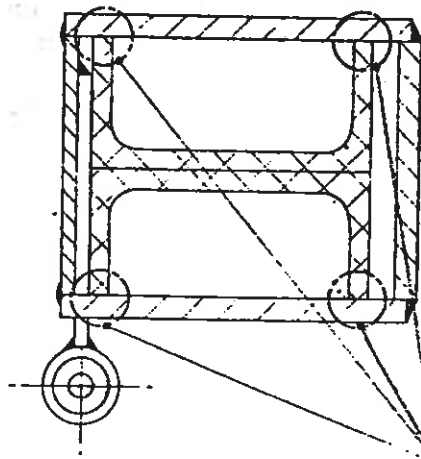
Date of issue: 2nd May, 1980

**SUPERSEDED**



**SUPERSEDED**

Section A - B



Fit without clearance