

## AIRWORTHINESS ADVICE NOTICE

TYPE AFFECTED: IS-28B2

SUBJECT: Miscellaneous airworthiness information.

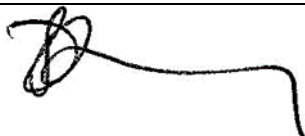
BACKGROUND: Refer AN 047 for historical IS-28B2 airworthiness advice.

APPROVED MODIFICATIONS: To continue in service past 35 calendar years, a contract with the type certificate / supplemental type certificate holder will need to be entered to purchase the supplemental type certificate number EASA STC 10054289. Contact [camo@aeroclubulromaniei.ro](mailto:camo@aeroclubulromaniei.ro) to initiate process. Note additionally that the GFA must be advised of the STC purchase for administrative purposes.

Refer type certificate / supplemental type certificate holders website for continuing airworthiness information.

DEFECTS: 1. A left elevator hinge pin was found broken in 2008. AWA 2008-1 was raised at that time but is now cancelled. Further inspection showed the right hinge pin on the right elevator was also cracked. The hinge pins in question are the inner ones and also serve as a locating pin for the elevator connecting yolk which couples the left and right elevator root ribs together during rigging and transmits the drive from the elevator push rod. It is not possible to detect the failure unless the tailplanes are in the folded position and the connecting yolk is separated from the elevator root ribs. At annual inspection it is recommended that hinge pin and flange area is thoroughly cleaned and visually inspected for cracks. Use X10 magnifying glass. A high-resolution digital camera with magnification may also assist in the inspection. Refer photos 1 to 3 on page 2 of this notice.

SIGNED:



GFA Chief Technical Officer

For and on behalf of:

**THE GLIDING FEDERATION  
OF AUSTRALIA**

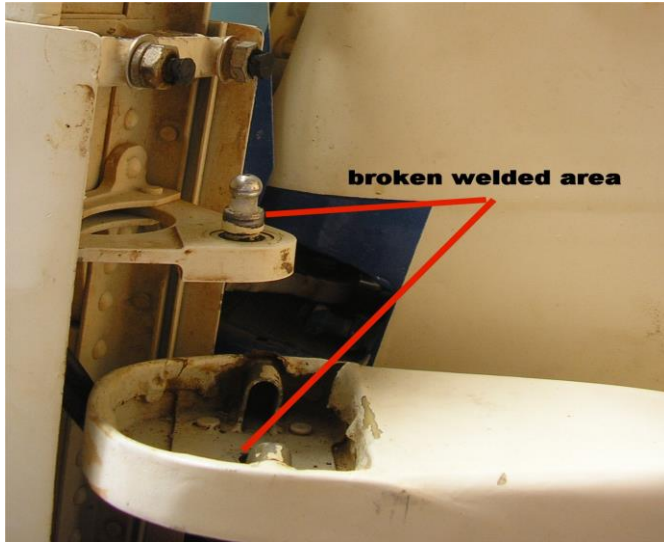


Photo 1. Left elevator hinge and root area showing hinge pin completely detached from bracket on root rib.



Photo 2. Left hinge pin failure area.



Photo 3. Right elevator hinge pin showing cracking around 40% of the circumference.