

COMMONWEALTH OF AUSTRALIA

DEPARTMENT OF TRANSPORT

AIRWORTHINESS DIRECTIVE - POWER SAILPLANE

GFA/AD/87 SPORTAVIA 1

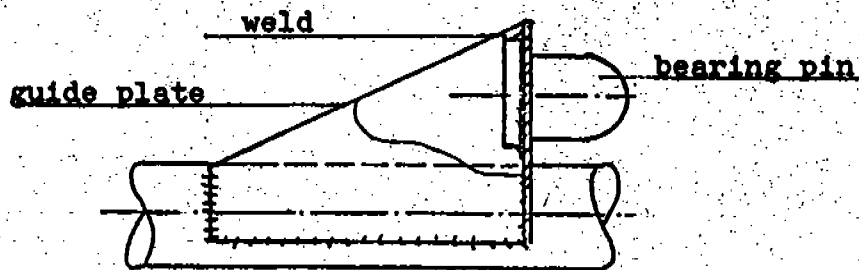
Type Affected: Scheibe SF 25C

Affected Area: Elevator support has been reported as possibly defective (Sportavia TM S-02-77)

Reason: Loosening of the aft bearing pin which is secured in the support fitting by means of tack welding.

Required Action:

1. Prior to next flight after disassembly of the elevator, check tight fit of the bearing pin in the fitting by tapping the bearing pin end slightly with a plastic hammer. Slight resilience will show that the weld is not in sound condition.
2. If the weld is not satisfactory, cut the chamfered guide plate so as to gain access to the pin head which is to be welded to the pin holder (using the W I G procedure welding wire 1.7734.2).



Aft elevator support - fuselage

Accomplishment and Log Book Entry:

Action 1 is to be carried out by a C. of A. Inspector.

Action 2 is to be carried out by an approved aircraft welder and the work entered up in the aircraft's log book.

Compliance:

The work is mandatory and is to be carried out before next flight.

This directive is issued pursuant to Air Navigation Regulations under the delegated authority of the Secretary of the Department of Transport.

Douglas Lyon

Douglas Lyon
CHIEF TECHNICAL OFFICER AIRWORTHINESS
GLIDING FEDERATION OF AUSTRALIA

Date of Issue: 28th July, 1977.

Distribution: L. Hudson, Owner of VH-GXM.
D.O.T. (A.W.O.R.)
C.T.O.s/A. & Ops.
R.T.O.s/A. & Ops.

A.T.O.
T.L.O.